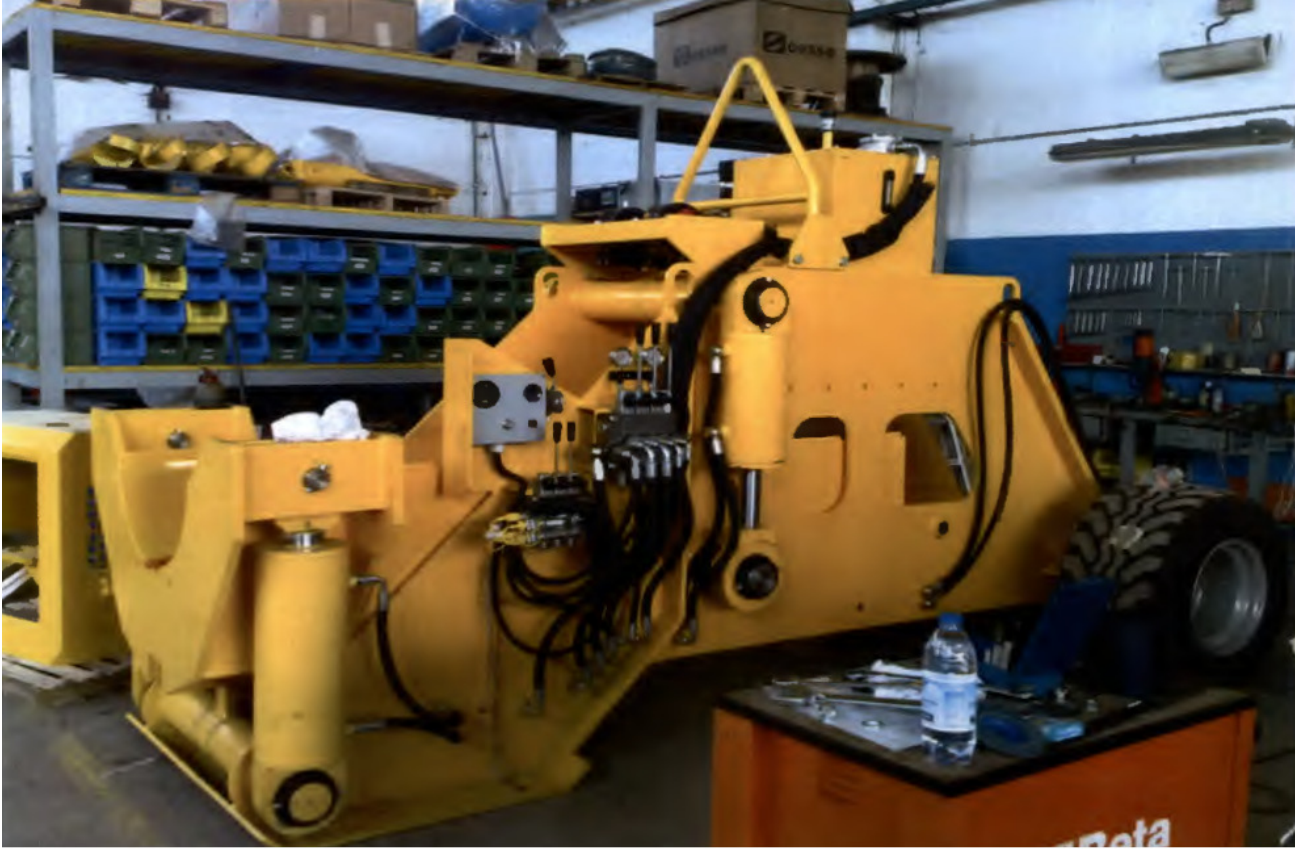


PB 6"-24"

Pipe Bending Machine 6"-24"



CoRis
www.coris-pipeline.com



ENGINE

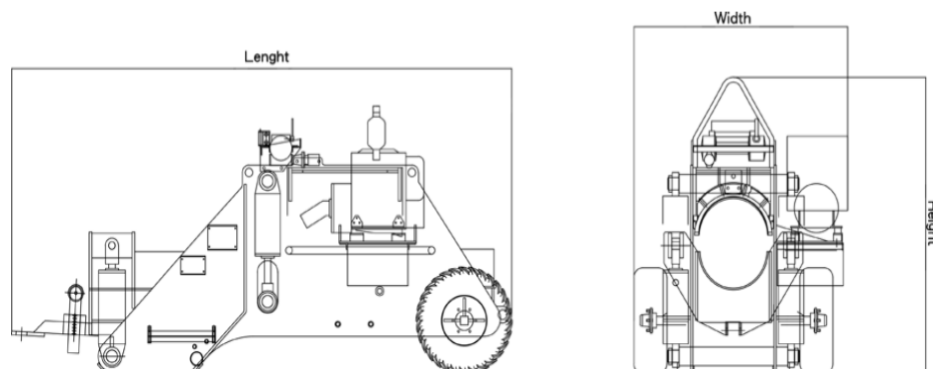
- Yanmar Model 4TNV88
- Governed speed 2300 RPM
- Diesel tank 85 l

HYDRAULIC SYSTEM:

- Maximum oil flow 69 lt/min.
- Hydraulic gear pump Sawyer Danfoss
- Hydraulic pressure 230 bar

Dimensions

Length:	470 cm
Width:	210 cm
Height:	270 cm
Weight:	7.500 Kg



CoRis srl
sede legale: Via Resga Enza 1, 43022 Montechiarugolo (PR) ITALY
sede operativa: fraz. Formio, 94/a, 43036 Fidenza (PR) ITALY
Telefono +39 0524 423576
e-mail info@coris-pipeline.com
www.coris-pipeline.com

PB 6"-24"

Pipe Bending Machine 6"-24"



CoRis
www.coris-pipeline.com



**Bending of the pipe X75
thickness-28mm**



**Our Pipe Bending 6-24
permits you to use the
plates superior to those of
the Pipe Bending 6-20**

MAXIMUM WALL THICKNESS BY GRADE (mm)						
PIPE OD inc	PIPE OD mm	X56	X60	X65	X70	X75
6	168	-	-	-	-	-
8	219	-	-	-	90,21	86,99
10	273	107,11	88,00	79,28	72,17	69,59
12	324	89,26	73,33	66,06	60,14	57,99
14	356	76,50	62,86	56,63	51,55	49,71
16	406	65,23	54,28	49,16	44,95	43,34
18	457	56,76	47,64	43,30	39,71	38,29
20	508	50,11	42,31	38,56	35,44	34,17
22	559	44,74	37,93	34,65	31,89	30,75
24	610	40,29	34,28	31,36	28,90	27,87



BENDING CHART 6"-24"

CoRis srl
sede legale: Via Resga Enza 1, 43022 Montechiarugolo (PR) ITALY
sede operativa: fraz. Formio, 94/a, 43036 Fidenza (PR) ITALY
Telefono +39 0524 423576
e-mail info@coris-pipeline.com
www.coris-pipeline.com